

**PSBB LEARNING LEADERSHIP ACADEMY**

**SUBJECT SCIENCE**

**REVISION 3**

**I. Multiple choice questions:**

**1. Bulged part of the eye ball in the front is called**

- a) Cornea      b) Choroid      c) Pupil      d) Retina

**2. Which one of the following statement is correct regarding cones and rods in the human eye?**

- a) Cones are sensitive to dim light      b) Cones are sensitive to bright light  
c) Rods are sensitive to bright light      d) Rods can sense colour

**3. Which of the following cell can change its shape?**

- a) White blood cell      b) Red blood cell      c) Egg cell      d) All the above

**4. The organelle serving as a primary packaging area for molecules that will be distributed throughout the cell is**

- a) Vacuole      b) Plastids      c) Mitochondria      d) Golgi apparatus

**5. When non-metals react with water then**

- a) Hydrogen gas is formed      b) Carbon dioxide gas is formed  
c) Non-metals do not react with water      d) none of these.

**6. The aqueous solution of the ash of burned magnesium ribbon is**

- a) Acidic      b) Basic      c) Neutral      d) All of the above

**II. Fill up the blanks:**

7. Metal reacts with dilute acids to form Metallic Salts and Hydrogen

8. Process of coating metals with zinc is called Galvanisation

9. The longest cell in human body is Nerve Cell

10. The organelle storing wastes in the plant cell is Vacuole

**III. Complete the analogy:**

11. Vacuole: Tonoplast : Nucleus: nuclear membrane

12. Bending of light ray: Refraction:: Splitting of white light: Diffusion

**IV. Identify the scientific term:**

13. A nonmetal which a good conductor of heat and electricity: Graphite

14. A Property of aluminum that makes it useful for wrapping food: Malleability

15. The powerhouse of the cell: Mitochondria

16. The cells that form the lining of the nasal tract: Ciliated Cells

**V. Unscramble the words given below and mention one function for each:**

a) lemxy: Xylem: Transports water and minerals from soil to the stem

b) cytplasmo: Cytoplasm: The parts of the cell float on the cytoplasm

**VI Answer in brief:**

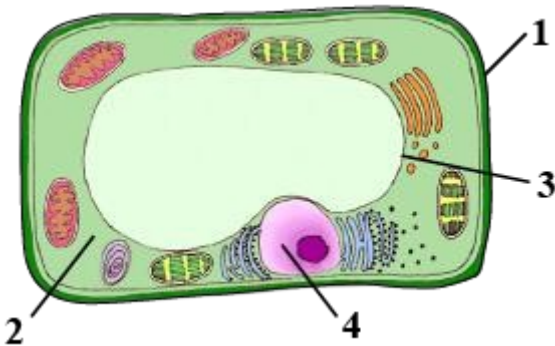
1. a) ' White phosphorous is stored under water'. Why?

Ans. Because white phosphorous is very toxic and highly reactive

b) Mention any two uses of phosphorous

Ans. Forms bones and Teeth

2. Observe the diagram given below and answer the following questions



a) Label parts 1,2,3,4

Ans. 1 = Cell wall, 2 = Cytoplasm, 3 = Tonoplast, 4 = Nucleus

b) Identify the given cell as a plant or an animal cell. Support your answer with reasons.

Ans. Plant Cell because It contains a vacuole and a cell membrane

c) State the function of part 4

Ans. Nucleus is like the control centre of the whole cell.

3. An iron knife is dipped in blue copper sulphate solution.

a) What changes do you observe in the above reaction?

Ans. The Blue copper sulphate solution turn green

b) Write a balanced chemical equation for the same.

Ans.  $\text{Fe} + \text{CuSO}_4 = \text{FeSO}_4 + \text{Cu}$

11. Draw neat labeled diagrams to show

a) Myopia

b) and its correction